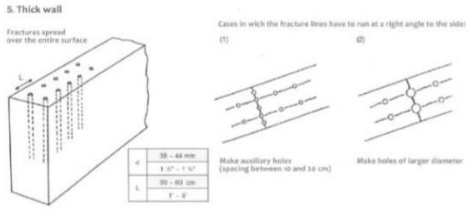
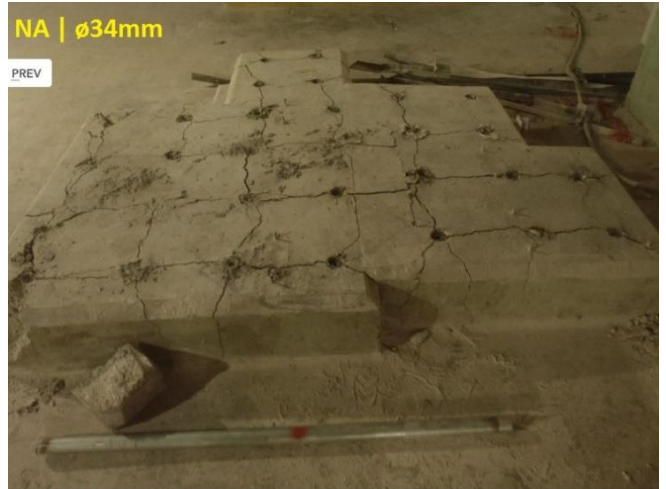


# SLOOPHULP.NL

Innovatief en toepasbaar

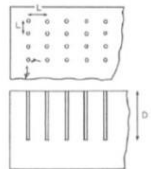
Voor het trillingsvrij en geluidloos slopen van beton, steen en metselwerk!



### Hole design for concrete demolition

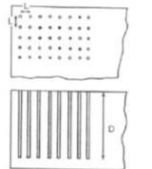
d Diameter  
L Hole spacing  
D Hole depth  
Ø Angle of inclination  
→ Hole direction

#### 1. General scheme for concrete



d	40 - 44 mm
α	1.5° - 1.9°
L	40 - 60 cm
Ø	1° - 2°
D	70% of height

#### 2. General scheme for reinforced concrete

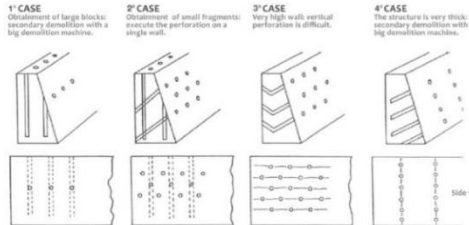
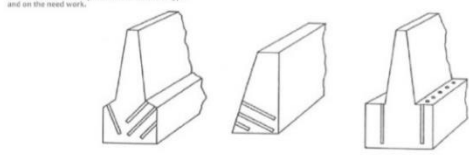


d	38 mm	38 - 44 mm
α	1.5°	1.5° - 1.9°
L	20 - 35 mm	30 - 40 cm
Ø	8° - 10°	1° - 1.4°
D	90% of height	

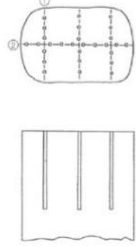
When the vertical drilling is hard, proceed with horizontal holes with a certain inclination.

Diameter and spacing holes depend on the quantity/distribution of reinforcement rods.

#### 6. Basements, bridges foundations, retaining walls



#### 3. Concrete block (foundations / bridge pylons, ecc...)



#### 4. Foundation piles

